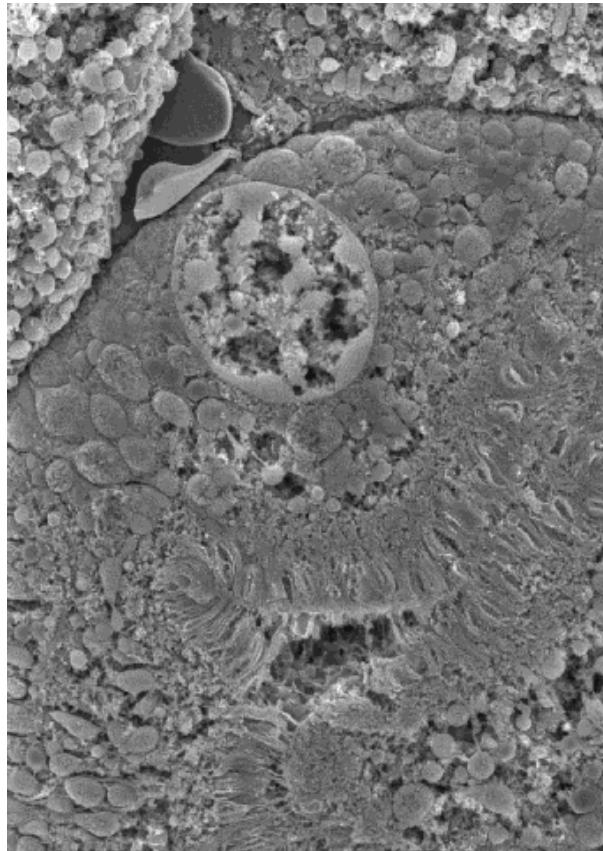


**KEELE  
UNIVERSITY**

**CENTRAL ELECTRON  
MICROSCOPE UNIT**



**CURRENT  
SERVICES AND CHARGES  
Commercial Users  
1 August 2019 - 31 July 2020**

## CHARGES FOR INDUSTRIAL USERS

	£/h
JEOL 100CXII TEM (normal)	152.87
TEM (x-ray microanalysis)	165.56
JEM 1230 TEM	165.53
SEM (normal)	152.87
SEM (x-ray microanalysis)	165.56
FESEM	179.90
Image Processing PC and Associated Equipment	25.93
Gold Coater	25.93 per session
Additional Technical Time (for sample preparation and image or photographic processing)	72.84
Two Photon/Confocal Microscope	175.73
Atomic Force Microscope – Prices on request	

*All prices for microscope usage include technical assistance and are subject to VAT*

*Consumable prices are subject to amendment according to suppliers charges*

To obtain consultancy advice on appropriate EM procedures contact:

Professor D. N. Furness  
Director of the Electron Microscope Unit  
Tel: (01782) 733496  
Email: [d.n.furness@keele.ac.uk](mailto:d.n.furness@keele.ac.uk)